

MAY 18 2018

Index No. G-13

# CERTIFICATE OF LOCATION OF GOVERNMENT CORNER

EAST QUARTER Corner of Section 9, Township 108 N, Range 39 W

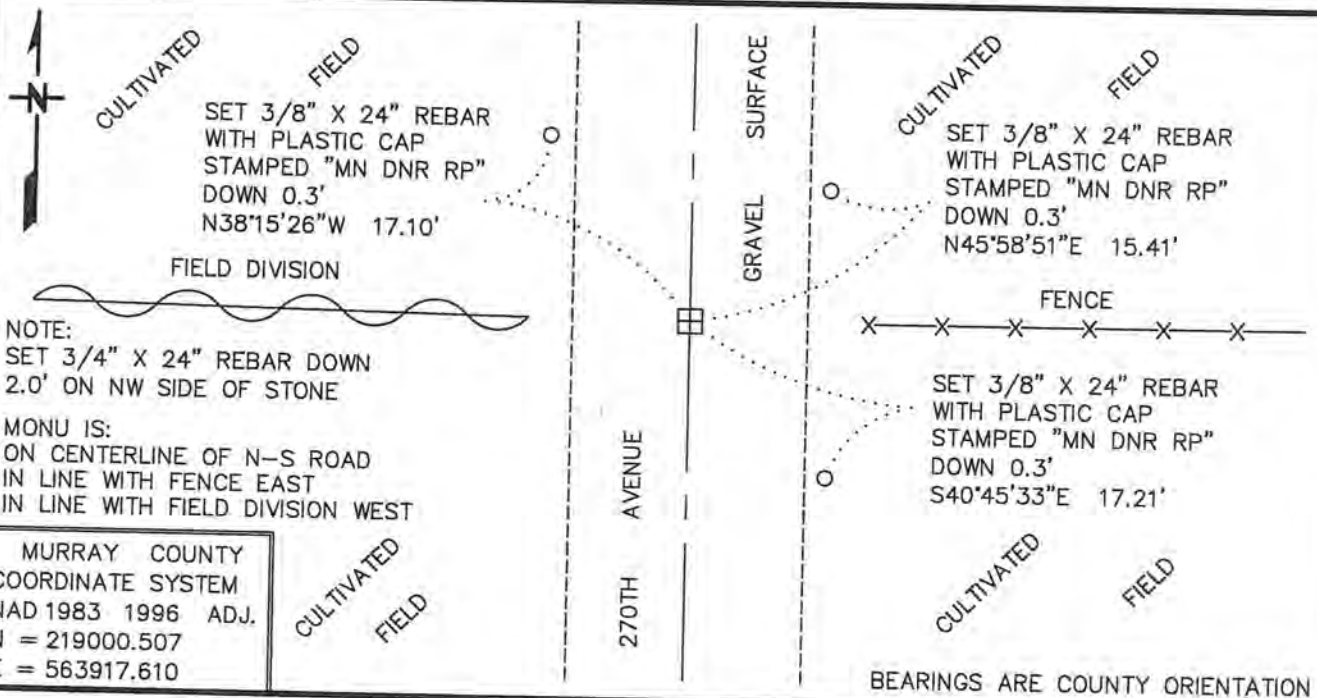
5TH Principal Meridian, State of Minnesota, County of MURRAY

At the corner location shown on the sketch:

On 9/12/2017 found a 15" X 7" STONE, DOWN 1.7',  
DATE

left monument as found, lowered monument, removed monument (explain)

On 9/12/2017 Placed a 3/4" X 12" REBAR WITH PLASTIC CAP STAMPED  
DATE "MN DNR LS 17003", DOWN 0.5', OVER FOUND STONE



Statement of evidence for this corner location is on back of this page.

FEBRUARY 2018  
WMA 02039

I hereby certify that this plan, specification, or report was prepared by me or under my direct supervision and that I am a duly Licensed Land Surveyor under the laws of the State of Minnesota.

SIGNATURE Bruce W. Shepperd  
BRUCE W SHEPPERD

DATE 5/15/18

License Number 17003

The DNR Division of Lands and Minerals contacted the following for survey information:

Website - [mngeo.state.mn.us](http://mngeo.state.mn.us) for GLO plat and field notes

Website - [murray-countymn.com](http://murray-countymn.com) for section and quarter section corner information

Murray County Recorder's Office

Zieske Land Surveying, Inc. of Windom

Madsen Land Surveying, Inc. of Fairmont

Bonnema Runke Stern, Inc. of Willmar

1861 U.S. General Land Office notes, obtained from [mngeo.state.mn.us](http://mngeo.state.mn.us), show the corner marked with a post, in a mound.

1899 June 19, Surveyor's Record Book A, page 85 obtained from the Murray County Recorder's Office, which is also on [murray-countymn.com](http://murray-countymn.com), contains a survey by J.W. Woolstencroft. The survey shows a stone at the corner but does not indicate if it was found or set. The corner is shown:

2647.0 feet from the northeast corner of Section 9

2647.0 feet from the northeast corner of Section 16

No Surveyor's Record Book A, page 248 obtained from the Murray County Recorder's  
Date Office, shows corner but a description of what kind of monument was found or set is not given. The corner is shown:

2645.5 feet from the northeast corner of Section 9

2645.5 feet from the northeast corner of Section 16

Survey states – *see page 240*. The following note is on page 240:

Surveyed by D.L. Bigham, County Surveyor of Redwood County, Minn. June 1901. Plotted by him July 5, 1901.

Original plat on file in office of Town Clerk of Holly Township.

This record made by J.R. Johnston, Co. Surveyor of Murray Co from original plat. June 12, 1915.

No Surveyor's Record Book A, page 249 obtained from the Murray County Recorder's  
Date Office, which is also on [murray-countymn.com](http://murray-countymn.com), shows a government corner at the corner. The corner is shown:

2645.8 feet from the northeast corner of Section 9

2645.5 feet from the northeast corner of Section 16

Survey states – *see page 240*. The following note is on page 240:

Surveyed by D.L. Bigham, County Surveyor of Redwood County, Minn. June 1901. Plotted by him July 5, 1901.

Original plat on file in office of Town Clerk of Holly Township.

This record made by J.R. Johnston, Co. Surveyor of Murray Co from original plat. June 12, 1915.

East Quarter Corner of Section 9, Township 108 North, Range 39 West  
Page 2 of 2

- 1915 June 19, Surveyor's Record Book A, page 278 obtained from the Murray County Recorder's Office, which is also on murray-countymn.com, contains a survey by J.R. Johnston, Murray County Surveyor. Survey states the following about the corner:  
"Stone previously set and relocated by testimony of old residents"

The corner is shown:

2638.0 feet from the center of Section 10

- 1988 April 8, ties to section and quarter section corners, obtained from Website - murray-countymn.com, states that a field stone was found at the corner, 21 inches below the gravel surface. A  $\frac{3}{4}$  inch by 14 inch steel pin was set above the stone and the following ties were taken to it:

nail and cap in brace post, west-northwest, 33.58 feet

nail and cap in post, east, 35.92 feet

- 2017 September 12, the DNR Division of Lands and Minerals found a  $\frac{1}{2}$  inch diameter by 16 inch long rebar, down 0.2 of a foot at the corner. Then a hole was dug with a backhoe the center being the found rebar and a 15 inch by 7 inch stone was found, down 1.7 feet. The stone was found to be:

under the found rebar

on the center line of north-south 270<sup>th</sup> Avenue (gravel surface)

2636.72 feet from the center of Section 10

2643.26 feet from the northeast corner of Section 16

A search was made for the record ties but no evidence of them were found.

Analysis of the above information led the DNR Division of Lands and Minerals to conclude that the found stone marks the location of the corner. The found a  $\frac{1}{2}$  inch diameter by 16 inch long rebar was discarded. A  $\frac{3}{4}$  inch by 24 inch rebar was set, down 2.0 feet, on the northwest side of the stone.